


# IOWA TITLE GUARANTY UPDATE

Dillon Malone, *Iowa Title Guaranty Director*

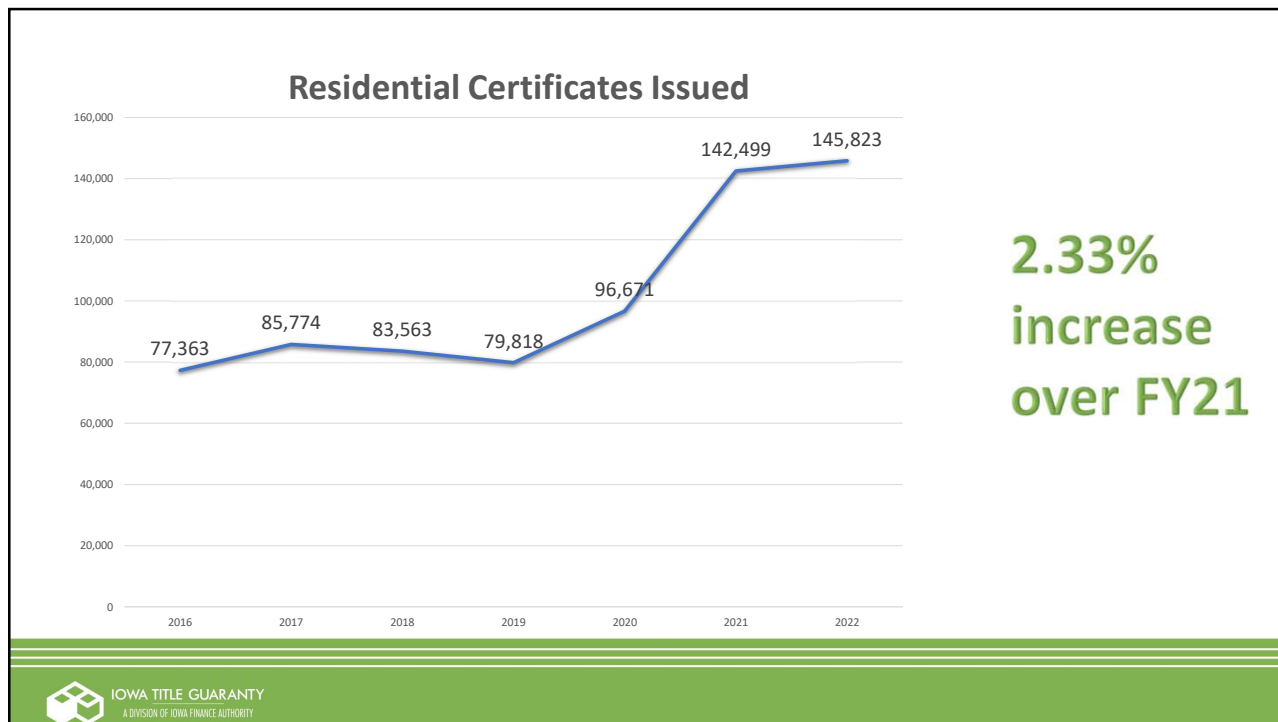


IOWA TITLE GUARANTY  
A DIVISION OF IOWA FINANCE AUTHORITY

1



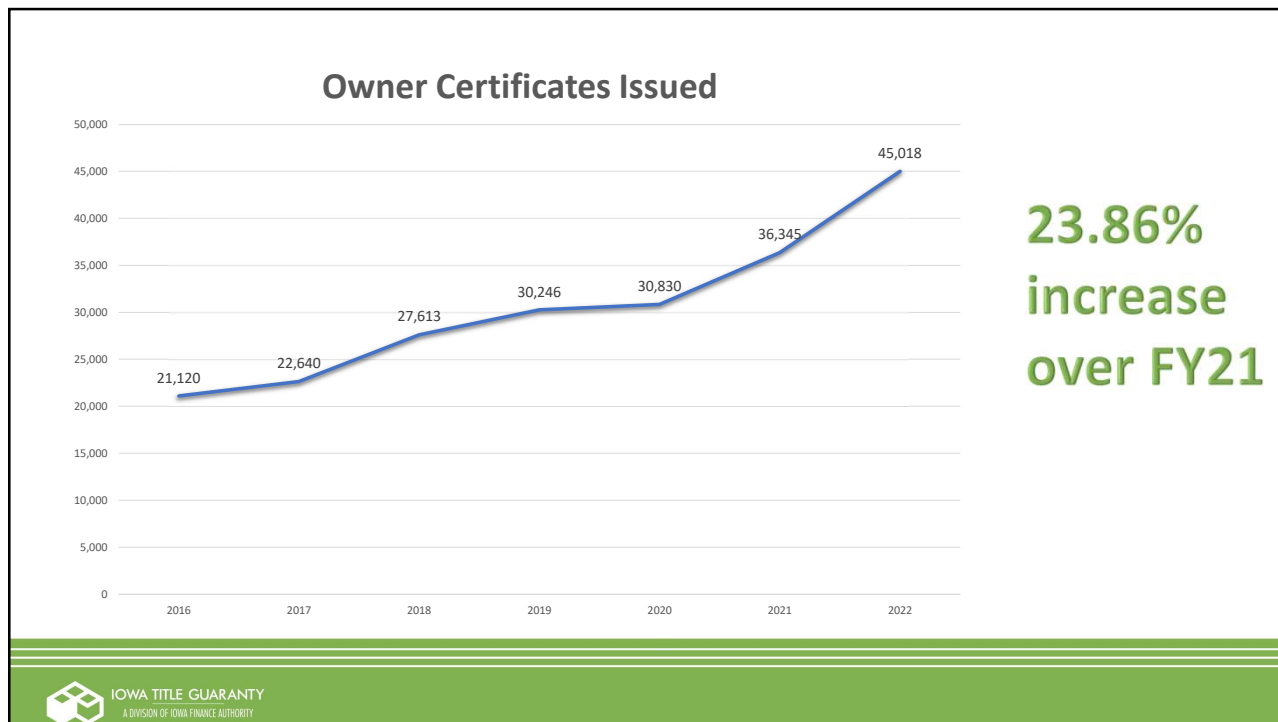
2



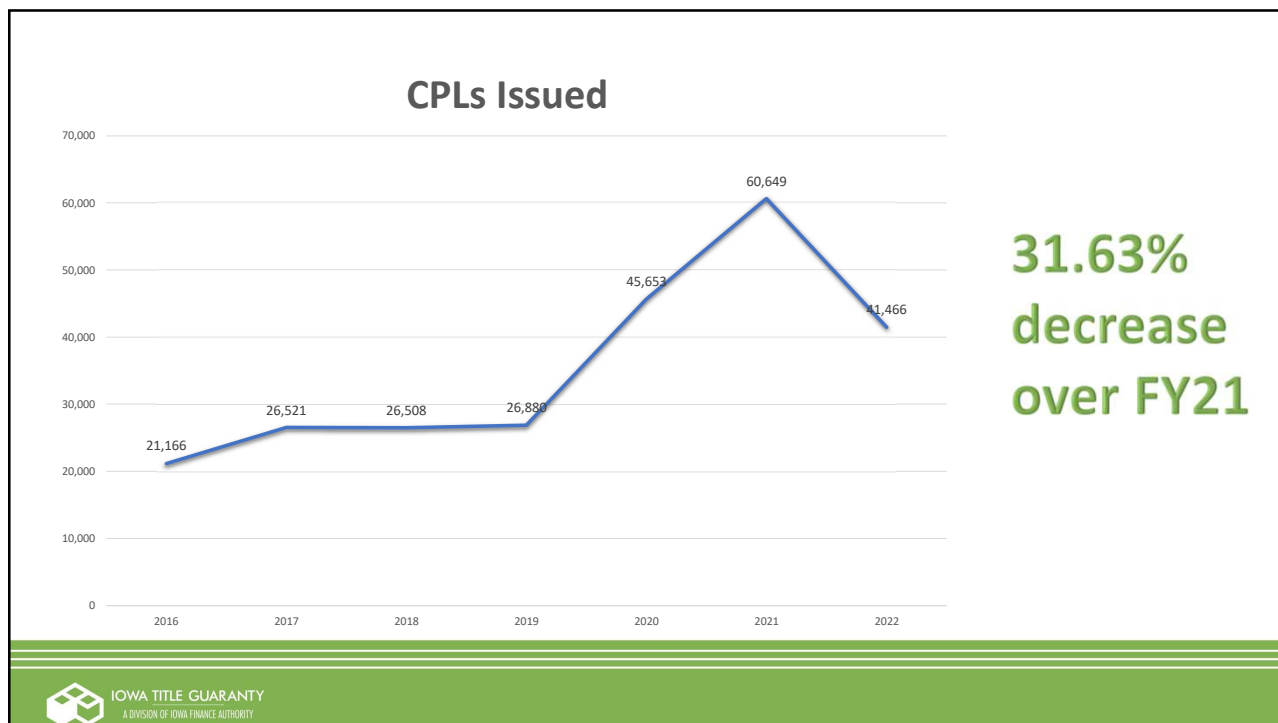
3



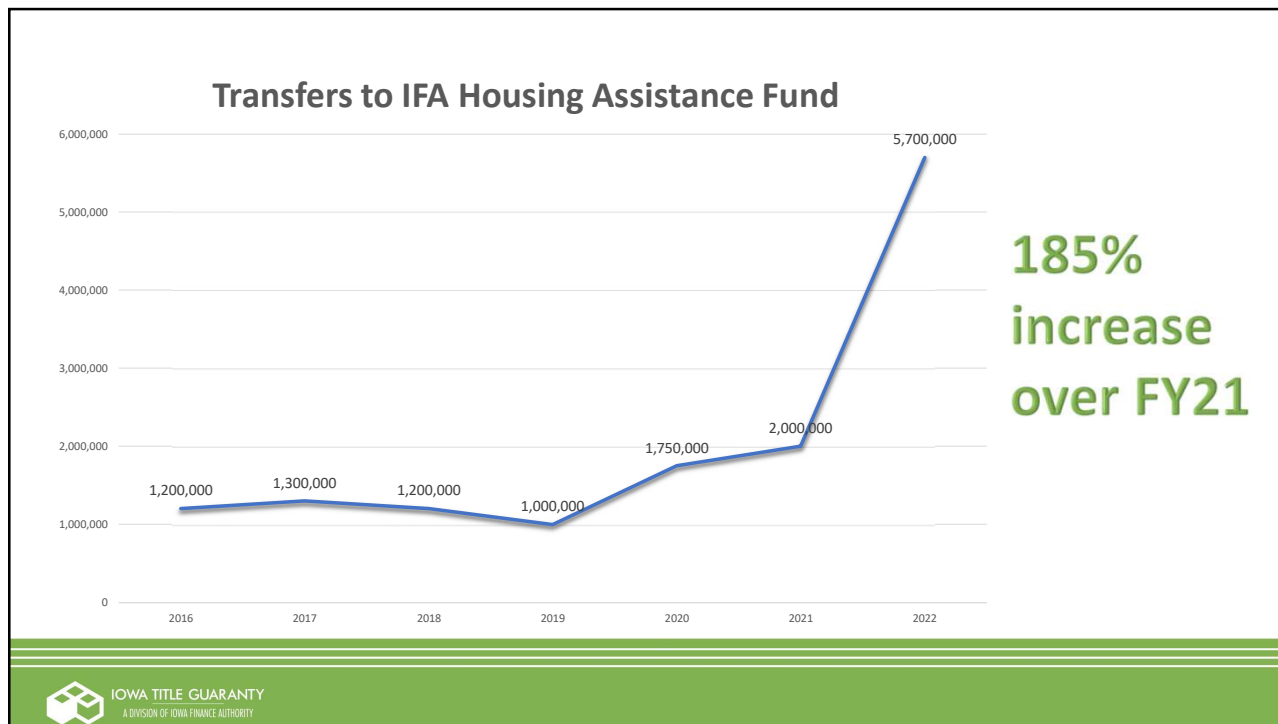
4



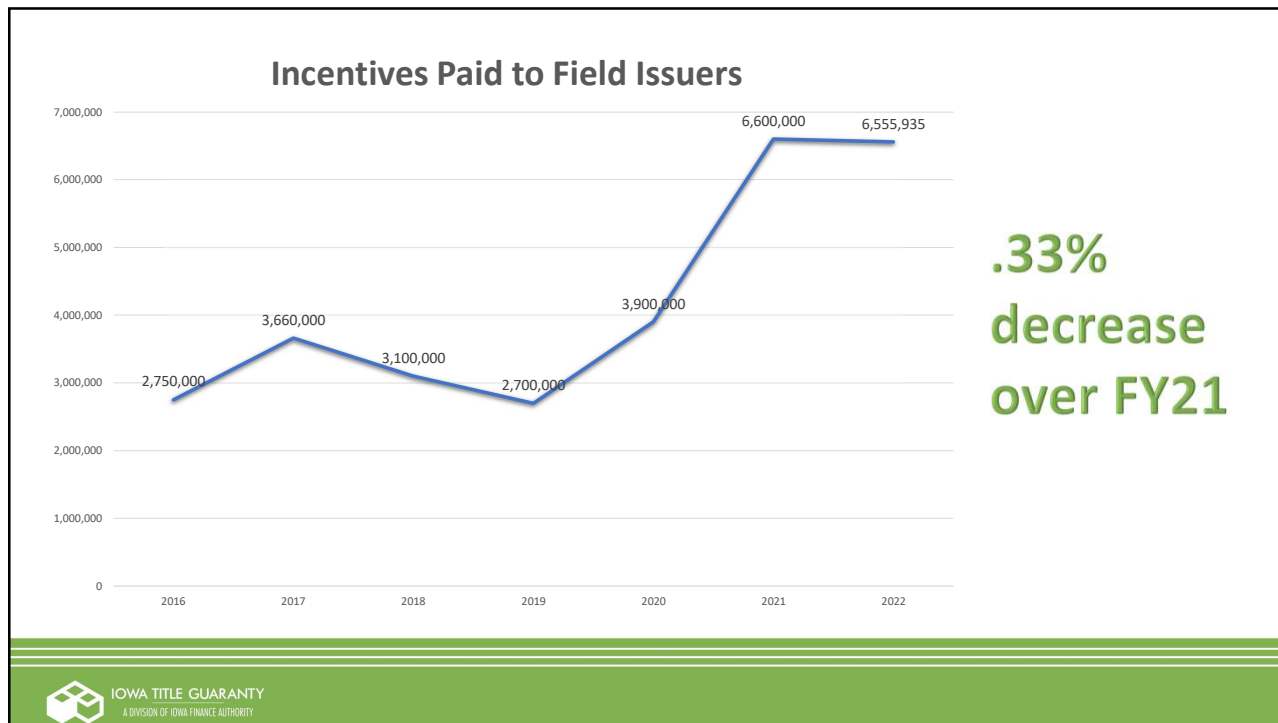
5



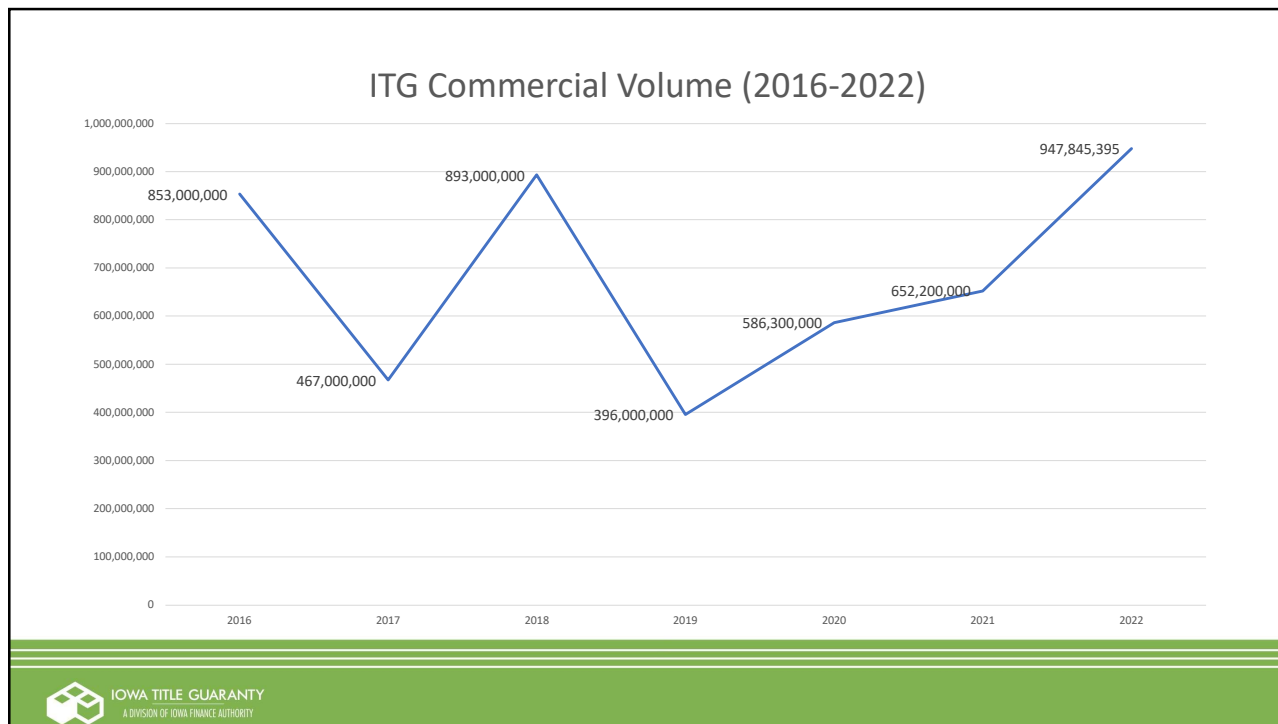
6



7



8



9



10

## Claims Trends

Claims Trends	Lenders	Owners	Total
<b>Claims in FY 2019</b> (July 1, 2018 to June 30, 2019)	129	13	142
<b>Claims in FY 2020</b> (July 1, 2019 to June 30, 2020)	88	18	106
<b>Claims in FY 2021</b> (July 1, 2020 to June 30, 2021)	37	17	54
<b>Claims in FY 2022</b> (July 1, 2021 to June 30, 2022)	46	18	64
<b>Claims to date in FY 2023</b> (July 1, 2022 to September 26, 2022)	12	6	18

## Current Active Claims Topics

Number of Claims	Nature of Claim
10	Issues with drafting, execution of Vesting Deed or Guaranteed Mortgage
6	Boundary Disputes
5	Mechanic's Liens
5	Prior Judgments or Liens
4	Claims in Recoupment Status
4	Break in the Chain of Title
2	Manufactured Home Endorsement Claim

## Average Claim Submission Time

<b>OVERALL</b>	<b>LENDERS</b>	<b>OWNERS</b>
4.23 years	5.17 years	2.36 years




## ITG Participating Abstractors

County Key	
<b>Allamakee</b>	
Plant	66.45%
GF	5.48%
Waiver	28.07%
% IA Population	0.44%
% of ITG Market	0.17%
Percentage of Total Work by Abstractor Type (Adhoc Cert Issued FY17 Forward v3, %abst per county).	
Number of Abstractor Type as of 4/1/2022 (Abstractor by county, Sheet 1).	
Percentage of Iowa's total population using 2020 U.S. Census Iowa Counties Population (Tab 2020 US Census).	
Percentage of Total Certificate Transactions (2017 duplicate transactions removed, % of ITG Market).	


  

Symbols and Colors Key	
* More than one plant.	
Dark Green	90% > work completed by plant.
Medium Green	80% > work completed by plant.
Light Green	70% > work completed by plant.
Yellow-Green	60% > work completed by plant.
Light Blue	Majority work completed by waiver.
Orange	Majority/high volume work completed by grandfather.
Light Orange	50/50 mix work completed by plant and waiver.
Light Purple	Unique mix of work distribution.



15

<b>Jasper*</b>		<b>Poweshiek*</b>		<b>Iowa*</b>		<b>Johnson*</b>		<b>Cedar</b>		<b>Clinton</b>				
Plant	78.23%	2	Plant	77.33%	2	Plant	78.64%	2	Plant	73.79%	1	Plant	80.57%	1
GF	5.24%	3	GF	3.74%	3	GF	4.30%	3	GF	5.21%	4	GF	4.26%	4
Waiver	16.53%	11	Waiver	18.94%	11	Waiver	17.06%	11	Waiver	14.40%	11	Waiver	21.00%	11
% IA Population	1.19%	% IA Population	0.58%	% IA Population	0.52%	% IA Population	4.79%	% IA Population	0.58%	% IA Population	1.46%	% IA Population	1.46%	
% of ITG Market	1.26%	% of ITG Market	0.57%	% of ITG Market	0.49%	% of ITG Market	5.24%	% of ITG Market	0.63%	% of ITG Market	1.49%	% of ITG Market	1.49%	
<b>Mahaska</b>		<b>Keokuk*</b>		<b>Washington</b>		<b>Louisa</b>		<b>Muscatine*</b>		<b>Scott</b>				
Plant	81.90%	1	Plant	68.57%	2	Plant	60.27%	1	Plant	0.00%	0	Plant	80.21%	2
GF	5.98%	3	GF	11.89%	5	GF	29.74%	6	GF	81.04%	8	GF	4.49%	4
Waiver	12.12%	11	Waiver	19.54%	11	Waiver	9.98%	11	Waiver	18.87%	11	Waiver	15.30%	11
% IA Population	0.70%	% IA Population	0.31%	% IA Population	0.71%	% IA Population	0.34%	% IA Population	1.36%	% IA Population	1.36%	% IA Population	5.47%	
% of ITG Market	0.51%	% of ITG Market	0.18%	% of ITG Market	0.70%	% of ITG Market	0.22%	% of ITG Market	1.36%	% of ITG Market	1.36%	% of ITG Market	7.44%	
<b>Monroe*</b>		<b>Wapello</b>		<b>Jefferson</b>		<b>Henry</b>		<b>Des Moines</b>						
Plant	79.56%	2	Plant	67.54%	1	Plant	27.60%	1	Plant	38.19%	1	Plant	79.32%	1
GF	6.76%	3	GF	21.57%	5	GF	48.32%	6	GF	50.80%	7	GF	13.86%	4
Waiver	13.68%	10	Waiver	10.89%	12	Waiver	24.08%	12	Waiver	11.01%	12	Waiver	6.82%	11
% IA Population	0.24%	% IA Population	1.11%	% IA Population	0.49%	% IA Population	0.64%	% IA Population	0.64%	% IA Population	1.22%	% IA Population	1.22%	
% of ITG Market	0.14%	% of ITG Market	0.67%	% of ITG Market	0.28%	% of ITG Market	0.35%	% of ITG Market	0.82%	% of ITG Market	0.82%	% of ITG Market	0.82%	
<b>Appanoose*</b>		<b>Davis</b>		<b>Van Buren</b>		<b>Lee</b>								
Plant	80.90%	2	Plant	26.66%	1	Plant	70.99%	1	Plant	0.00%	0			
GF	6.04%	3	GF	54.70%	4	GF	7.41%	4	GF	24.15%	5			
Waiver	13.05%	10	Waiver	18.64%	10	Waiver	21.60%	11	Waiver	75.85%	10			
% IA Population	0.39%	% IA Population	0.29%	% IA Population	0.23%	% IA Population	1.05%	% IA Population	1.05%					
% of ITG Market	0.25%	% of ITG Market	0.12%	% of ITG Market	0.07%	% of ITG Market	0.47%	% of ITG Market	0.47%					



16



Mitchell		Howard		Winneshie		Allamakee			
Plant	92.98% 1	Plant	92.56% 1	Plant	69.11% 1	Plant	66.45% 1		
GF	3.88% 3	GF	2.20% 3	GF	2.61% 3	GF	5.48% 3		
Waiver	3.14% 11	Waiver	5.23% 11	Waiver	28.28% 11	Waiver	28.07% 11		
% IA Population	0.33%	% IA Population	0.30%	% IA Population	0.63%	% IA Population	0.44%		
% of ITG Market	0.21%	% of ITG Market	0.24%	% of ITG Market	0.41%	% of ITG Market	0.17%		
Floyd		Chickasaw		Fayette		Clayton			
Plant	90.56% 1	Plant	66.22% 1	Plant	54.24% 1	Plant	74.00% 1		
GF	2.44% 3	GF	2.86% 3	GF	5.31% 3	GF	4.40% 3		
Waiver	7.00% 11	Waiver	30.92% 11	Waiver	40.44% 11	Waiver	21.60% 11		
% IA Population	0.49%	% IA Population	0.38%	% IA Population	0.61%	% IA Population	0.53%		
% of ITG Market	0.40%	% of ITG Market	0.23%	% of ITG Market	0.32%	% of ITG Market	0.28%		
Butler		Bremer							
Plant	55.10% 1	Plant	45.91% 1						
GF	2.63% 3	GF	2.93% 3						
Waiver	42.28% 11	Waiver	51.16% 11						
% IA Population	0.45%	% IA Population	0.78%						
% of ITG Market	0.40%	% of ITG Market	0.82%						
Grundy		Black Hawk		Buchanan		Delaware		Dubuque*	
Plant	51.55% 1	Plant	37.02% 1	Plant	50.02% 1	Plant	89.31% 1	Plant	86.99% 2
GF	4.14% 3	GF	2.42% 3	GF	3.92% 3	GF	2.54% 3	GF	3.17% 4
Waiver	44.32% 11	Waiver	60.56% 11	Waiver	46.06% 11	Waiver	8.15% 11	Waiver	9.84% 11
% IA Population	0.39%	% IA Population	4.11%	% IA Population	0.64%	% IA Population	0.55%	% IA Population	3.11%
% of ITG Market	0.40%	% of ITG Market	3.85%	% of ITG Market	0.53%	% of ITG Market	0.57%	% of ITG Market	2.87%
Tama		Benton		Linn*		Jones*		Jackson	
Plant	65.80% 1	Plant	79.35% 1	Plant	84.65% 2	Plant	79.80% 2	Plant	68.01% 1
GF	4.54% 3	GF	4.54% 3	GF	3.35% 4	GF	5.07% 4	GF	15.08% 4
Waiver	29.65% 11	Waiver	16.10% 11	Waiver	12.00% 11	Waiver	15.13% 11	Waiver	16.91% 11
% IA Population	0.54%	% IA Population	0.80%	% IA Population	7.22%	% IA Population	0.65%	% IA Population	0.61%
% of ITG Market	0.32%	% of ITG Market	0.68%	% of ITG Market	7.92%	% of ITG Market	0.56%	% of ITG Market	0.52%



17

Kossuth*		Winnebago		Worth		Mitchell	
Plant	91.18% 2	Plant	91.67% 1	Plant	82.87% 1	Plant	92.98% 1
GF	4.15% 3	GF	4.83% 3	GF	5.99% 3	GF	3.88% 3
Waiver	4.67% 10	Waiver	3.49% 11	Waiver	11.14% 11	Waiver	3.14% 11
% IA Population	0.46%	% IA Population	0.33%	% IA Population	0.23%	% IA Population	0.33%
% of ITG Market	0.32%	% of ITG Market	0.23%	% of ITG Market	0.15%	% of ITG Market	0.21%
		Hancock		Cerro Gordo		Floyd	
		Plant	90.53% 1	Plant	85.52% 1	Plant	90.56% 1
		GF	3.74% 3	GF	4.55% 3	GF	2.44% 3
		Waiver	5.73% 11	Waiver	9.93% 11	Waiver	7.00% 11
		% IA Population	0.34%	% IA Population	1.35%	% IA Population	0.49%
		% of ITG Market	0.25%	% of ITG Market	1.16%	% of ITG Market	0.40%
Humboldt*		Wright*		Franklin		Butler	
Plant	91.30% 2	Plant	87.81% 3	Plant	81.63% 1	Plant	55.10% 1
GF	4.49% 3	GF	4.49% 3	GF	5.78% 3	GF	2.63% 3
Waiver	4.21% 10	Waiver	7.70% 11	Waiver	12.59% 11	Waiver	42.28% 11
% IA Population	0.30%	% IA Population	0.41%	% IA Population	0.31%	% IA Population	0.45%
% of ITG Market	0.27%	% of ITG Market	0.25%	% of ITG Market	0.13%	% of ITG Market	0.40%
Webster		Hamilton		Hardin		Grundy	
Plant	90.65% 2	Plant	85.69% 1	Plant	75.31% 1	Plant	51.55% 1
GF	4.27% 3	GF	3.87% 3	GF	3.94% 3	GF	4.14% 3
Waiver	5.08% 11	Waiver	10.44% 11	Waiver	20.75% 11	Waiver	44.32% 11
% IA Population	1.16%	% IA Population	0.47%	% IA Population	0.53%	% IA Population	0.39%
% of ITG Market	0.80%	% of ITG Market	0.31%	% of ITG Market	0.33%	% of ITG Market	0.40%



18

<b>Lyon</b>		<b>Osceola</b>		<b>Dickinson</b>		<b>Emmet</b>	
Plant	68.66% 1	Plant	78.10% 1	Plant	85.67% 1	Plant	82.65% 1
GF	3.17% 3	GF	7.92% 3	GF	3.67% 3	GF	6.74% 3
Waiver	28.17% 10	Waiver	13.98% 10	Waiver	10.65% 11	Waiver	10.61% 11
% IA Population	0.37%	% IA Population	0.19%	% IA Population	0.55%	% IA Population	0.29%
% of ITG Market	0.30%	% of ITG Market	0.08%	% of ITG Market	0.94%	% of ITG Market	0.18%
<b>Sioux</b>		<b>O'Brien*</b>		<b>Clay</b>		<b>Palo Alto*</b>	
Plant	93.45% 1	Plant	89.38% 2	Plant	89.61% 1	Plant	82.64% 2
GF	3.00% 3	GF	4.93% 3	GF	3.33% 3	GF	3.85% 3
Waiver	3.54% 11	Waiver	5.69% 10	Waiver	7.07% 10	Waiver	13.52% 11
% IA Population	1.12%	% IA Population	0.44%	% IA Population	0.51%	% IA Population	0.28%
% of ITG Market	0.69%	% of ITG Market	0.23%	% of ITG Market	0.51%	% of ITG Market	0.18%
<b>Plymouth*</b>		<b>Cherokee</b>		<b>Buena Vista*</b>		<b>Pocahontas*</b>	
Plant	89.85% 2	Plant	88.28% 1	Plant	93.25% 2	Plant	88.71% 2
GF	6.01% 3	GF	5.64% 3	GF	2.52% 3	GF	5.75% 3
Waiver	4.14% 10	Waiver	6.08% 10	Waiver	4.23% 10	Waiver	5.54% 10
% IA Population	0.81%	% IA Population	0.37%	% IA Population	0.65%	% IA Population	0.22%
% of ITG Market	0.58%	% of ITG Market	0.23%	% of ITG Market	0.44%	% of ITG Market	0.09%
<b>Woodbury*</b>		<b>Ida</b>		<b>Sac</b>		<b>Calhoun*</b>	
Plant	92.12% 2	Plant	92.45% 1	Plant	87.31% 1	Plant	90.09% 2
GF	5.25% 3	GF	4.77% 3	GF	7.80% 3	GF	5.41% 3
Waiver	2.63% 11	Waiver	2.78% 10	Waiver	4.89% 10	Waiver	4.50% 10
% IA Population	3.32%	% IA Population	0.22%	% IA Population	0.31%	% IA Population	0.31%
% of ITG Market	2.81%	% of ITG Market	0.10%	% of ITG Market	0.13%	% of ITG Market	0.17%



19

<b>Monona</b>		<b>Crawford*</b>		<b>Carroll</b>		<b>Green</b>	
Plant	88.23% 1	Plant	91.62% 2	Plant	87.65% 1	Plant	84.55% 1
GF	8.41% 3	GF	5.25% 3	GF	6.36% 3	GF	7.54% 3
Waiver	3.36% 10	Waiver	3.13% 10	Waiver	6.00% 10	Waiver	7.91% 10
% IA Population	0.27%	% IA Population	0.52%	% IA Population	0.65%	% IA Population	0.27%
% of ITG Market	0.13%	% of ITG Market	0.21%	% of ITG Market	0.39%	% of ITG Market	0.16%
<b>Harrison</b>		<b>Shelby</b>		<b>Audubon*</b>		<b>Guthrie</b>	
Plant	72.25% 1	Plant	84.70% 1	Plant	85.86% 2	Plant	74.03% 1
GF	16.62% 3	GF	7.13% 3	GF	6.06% 3	GF	6.94% 3
Waiver	11.13% 12	Waiver	8.17% 11	Waiver	8.08% 10	Waiver	19.03% 10
% IA Population	0.46%	% IA Population	0.37%	% IA Population	0.18%	% IA Population	0.33%
% of ITG Market	0.16%	% of ITG Market	0.22%	% of ITG Market	0.08%	% of ITG Market	0.37%
<b>Pottawattamie*</b>		<b>Cass</b>		<b>Adair*</b>		<b>Madison</b>	
Plant	75.29% 2	Plant	82.38% 1	Plant	77.92% 2	Plant	70.34% 1
GF	16.43% 3	GF	9.07% 3	GF	7.50% 3	GF	6.33% 3
Waiver	8.29% 11	Waiver	8.55% 11	Waiver	14.57% 10	Waiver	23.33% 11
% IA Population	2.94%	% IA Population	0.41%	% IA Population	0.23%	% IA Population	0.52%
% of ITG Market	1.23%	% of ITG Market	0.23%	% of ITG Market	0.14%	% of ITG Market	0.72%
<b>Mills</b>		<b>Montgomery</b>		<b>Adams</b>		<b>Union*</b>	
Plant	50.93% 1	Plant	81.32% 1	Plant	81.15% 1	Plant	84.37% 2
GF	26.75% 3	GF	9.21% 3	GF	10.25% 3	GF	9.59% 3
Waiver	22.31% 12	Waiver	9.47% 10	Waiver	8.61% 10	Waiver	6.04% 10
% IA Population	0.45%	% IA Population	0.32%	% IA Population	0.12%	% IA Population	0.38%
% of ITG Market	0.19%	% of ITG Market	0.15%	% of ITG Market	0.05%	% of ITG Market	0.20%
<b>Fremont</b>		<b>Page</b>		<b>Taylor</b>		<b>Ringgold*</b>	
Plant	71.19% 1	Plant	84.53% 1	Plant	80.31% 1	Plant	78.91% 2
GF	16.07% 3	GF	7.70% 3	GF	10.76% 3	GF	6.05% 3
Waiver	12.74% 10	Waiver	7.78% 11	Waiver	8.92% 10	Waiver	15.04% 10
% IA Population	0.21%	% IA Population	0.48%	% IA Population	0.18%	% IA Population	0.15%
% of ITG Market	0.08%	% of ITG Market	0.25%	% of ITG Market	0.08%	% of ITG Market	0.12%



20

Green			Boone*			Story			Marshall*		
Plant	84.55%	1	Plant	80.71%	2	Plant	82.22%	1	Plant	84.69%	3
GF	7.54%	3	GF	5.19%	3	GF	4.00%	3	GF	4.55%	3
Waiver	7.91%	10	Waiver	14.10%	11	Waiver	13.78%	11	Waiver	10.77%	11
% IA Population	0.27%		% IA Population	0.84%		% IA Population	3.09%		% IA Population	1.26%	
% of ITG Market	0.16%		% of ITG Market	1.03%		% of ITG Market	2.77%		% of ITG Market	0.97%	
Guthrie			Dallas*			Polk*			Jasper*		
Plant	74.03%	1	Plant	78.17%	4	Plant	77.51%	5	Plant	78.23%	2
GF	6.94%	3	GF	3.49%	4	GF	3.96%	4	GF	5.24%	3
Waiver	19.03%	10	Waiver	18.34%	11	Waiver	18.53%	11	Waiver	16.53%	11
% IA Population	0.33%		% IA Population	3.12%		% IA Population	15.43%		% IA Population	1.19%	
% of ITG Market	0.37%		% of ITG Market	6.30%		% of ITG Market	22.58%		% of ITG Market	1.26%	
Madison			Warren*			Marion			Mahaska		
Plant	70.34%	1	Plant	72.35%	2	Plant	83.55%	1	Plant	81.90%	1
GF	6.33%	3	GF	5.52%	3	GF	4.74%	3	GF	5.98%	3
Waiver	23.33%	11	Waiver	22.13%	11	Waiver	11.71%	11	Waiver	12.12%	11
% IA Population	0.52%		% IA Population	1.64%		% IA Population	1.05%		% IA Population	0.70%	
% of ITG Market	0.72%		% of ITG Market	2.62%		% of ITG Market	1.17%		% of ITG Market	0.51%	
Union*			Clarke			Lucas			Monroe*		
Plant	84.37%	2	Plant	70.04%	1	Plant	76.38%	1	Plant	79.56%	2
GF	9.59%	3	GF	6.30%	3	GF	6.62%	3	GF	6.76%	3
Waiver	6.04%	10	Waiver	23.66%	11	Waiver	17.00%	11	Waiver	13.68%	10
% IA Population	0.38%		% IA Population	0.31%		% IA Population	0.27%		% IA Population	0.24%	
% of ITG Market	0.20%		% of ITG Market	0.19%		% of ITG Market	0.18%		% of ITG Market	0.14%	
Ringgold*			Decatur			Wayne			Appanoose*		
Plant	78.91%	2	Plant	66.40%	1	Plant	79.18%	1	Plant	80.90%	2
GF	6.05%	3	GF	20.04%	3	GF	7.08%	3	GF	6.04%	3
Waiver	15.04%	10	Waiver	13.56%	10	Waiver	13.73%	10	Waiver	13.05%	10
% IA Population	0.15%		% IA Population	0.24%		% IA Population	0.20%		% IA Population	0.39%	
% of ITG Market	0.12%		% of ITG Market	0.11%		% of ITG Market	0.20%		% of ITG Market	0.25%	

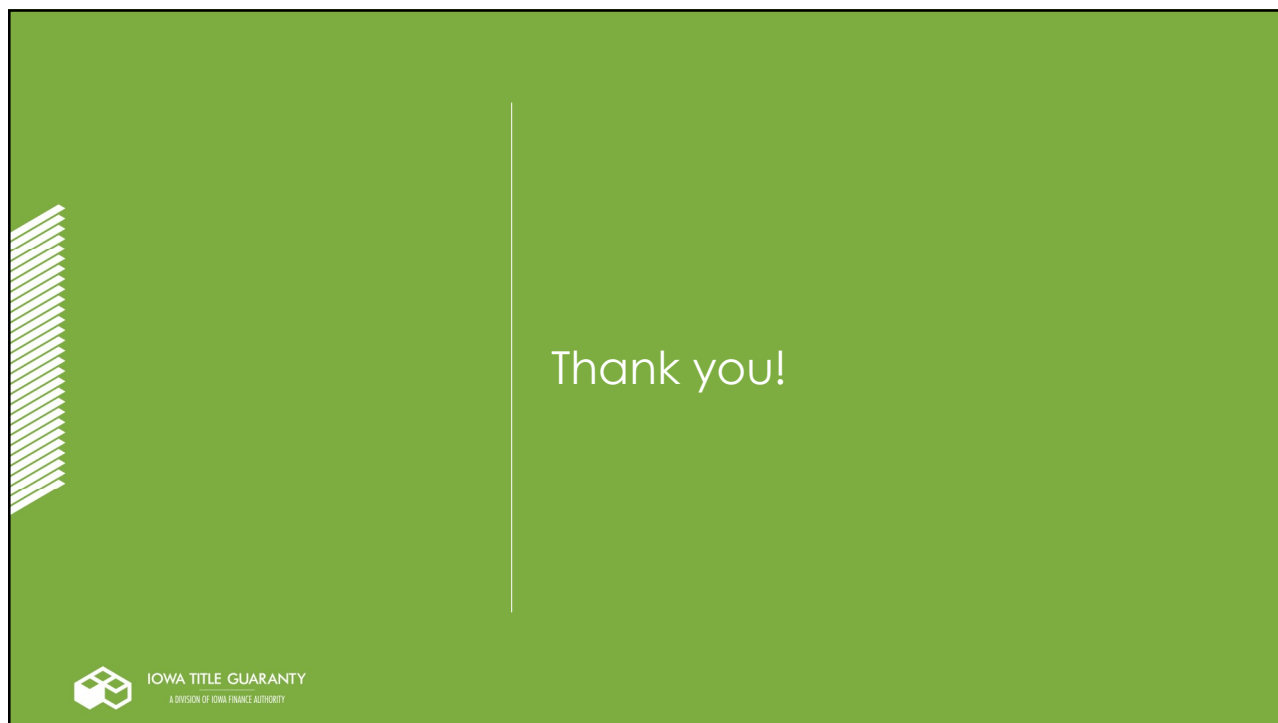


21

Lyon			Osceola			Dickinson			Emmet			Kossuth*			Vinebag			Vorth			Mitchell			Howard			Vinneshiek			Allamakee					
Plant	68.66%	1	Plant	78.10%	1	Plant	82.65%	1	Plant	91.81%	2	Plant	91.67%	2	Plant	82.87%	1	Plant	82.98%	1	Plant	82.56%	1	Plant	82.56%	1	Plant	66.45%	1						
GF	3.17%	3	GF	7.92%	3	GF	3.87%	3	GF	6.74%	3	GF	4.93%	3	GF	5.89%	3	GF	3.88%	3	GF	2.20%	3	GF	2.81%	3	GF	6.48%	3						
Waiver	23.17%	10	Waiver	13.89%	10	Waiver	10.85%	10	Waiver	10.81%	10	Waiver	4.67%	10	Waiver	3.49%	10	Waiver	3.19%	10	Waiver	5.22%	10	Waiver	20.29%	10	Waiver	25.07%	10						
% IA Population	0.37%		% IA Population	0.19%		% IA Population	0.95%		% IA Population	0.29%		% IA Population	0.46%		% IA Population	0.23%		% IA Population	0.33%		% IA Population	0.30%		% IA Population	0.30%		% IA Population	0.44%							
% of ITG Market	0.30%		% of ITG Market	0.08%		% of ITG Market	0.34%		% of ITG Market	0.18%		% of ITG Market	0.32%		% of ITG Market	0.23%		% of ITG Market	0.15%		% of ITG Market	0.21%		% of ITG Market	0.24%		% of ITG Market	0.41%							
Sioux			O'Brien*			Clas			Palo Alto			Hancock			Cerro Gordo			Floyd			Chickasaw			Fayette			Clayton								
Plant	93.49%	2	Plant	83.98%	2	Plant	83.84%	2	Plant	92.64%	2	Plant	90.95%	2	Plant	89.62%	2	Plant	89.82%	2	Plant	84.24%	2	Plant	84.24%	2	Plant	74.00%	1						
GF	3.00%	3	GF	4.93%	3	GF	3.33%	3	GF	3.85%	3	GF	3.74%	3	GF	4.55%	3	GF	2.44%	3	GF	2.86%	3	GF	5.31%	3	GF	4.40%	3						
Waiver	3.54%	10	Waiver	5.69%	10	Waiver	7.07%	10	Waiver	13.52%	11	Waiver	9.32%	10	Waiver	9.32%	10	Waiver	7.00%	10	Waiver	30.92%	10	Waiver	40.44%	10	Waiver	21.80%	10						
% IA Population	1.12%		% IA Population	0.44%		% IA Population	0.57%		% IA Population	0.29%		% IA Population	0.34%		% IA Population	0.34%		% IA Population	0.49%		% IA Population	0.49%		% IA Population	0.36%		% IA Population	0.57%							
% of ITG Market	0.89%		% of ITG Market	0.23%		% of ITG Market	0.51%		% of ITG Market	0.18%		% of ITG Market	0.25%		% of ITG Market	0.18%		% of ITG Market	0.23%		% of ITG Market	0.23%		% of ITG Market	0.23%		% of ITG Market	0.32%							
Plymouth*			Cherokee			Buena Vista*			Pocahontas*			Humboldt*			Vright*			Franklin			Butler			Bremer											
Plant	89.89%	2	Plant	88.29%	1	Plant	83.25%	2	Plant	88.71%	2	Plant	91.30%	2	Plant	87.80%	2	Plant	81.83%	1	Plant	85.30%	1	Plant	45.31%	1	Plant	74.00%	1						
GF	6.05%	3	GF	6.04%	3	GF	2.92%	3	GF	6.79%	3	GF	4.49%	3	GF	4.49%	3	GF	5.79%	3	GF	4.49%	3	GF	2.92%	3	GF	2.92%	3						
Waiver	4.14%	10	Waiver	6.08%	10	Waiver	4.23%	10	Waiver	5.54%	10	Waiver	4.21%	10	Waiver	7.70%	10	Waiver	12.59%	10	Waiver	42.28%	10	Waiver	51.16%	10	Waiver	8.15%	10						
% IA Population	0.81%		% IA Population	0.37%		% IA Population	0.65%		% IA Population	0.22%		% IA Population	0.30%		% IA Population	0.41%		% IA Population	0.31%		% IA Population	0.45%		% IA Population	0.78%		% IA Population	0.57%							
% of ITG Market	0.58%		% of ITG Market	0.23%		% of ITG Market	0.44%		% of ITG Market	0.09%		% of ITG Market	0.27%		% of ITG Market	0.29%		% of ITG Market	0.13%		% of ITG Market	0.13%		% of ITG Market	0.49%		% of ITG Market	0.62%							
Veechburg*			Ira			Sas			Edgemoor*			Vebster			Hamilton			Hardin			Grundy			Black Hawk											
Plant	92.12%	2	Plant	82.45%	2	Plant	87.31%	2	Plant	90.09%	2	Plant	90.65%	2	Plant	85.63%	2	Plant	75.31%	1	Plant	51.65%	1	Plant	37.02%	1	Plant	50.02%	1						
GF	8.25%	3	GF	4.77%	3	GF	7.89%	3	GF	6.14%	3	GF	4.27%	3	GF	3.87%	3	GF	3.94%	3	GF	4.14%	3	GF	2.42%	3	GF	3.82%	3						
Waiver	2.63%	10	Waiver	2.76%	10	Waiver	4.53%	10	Waiver	4.50%	10	Waiver	5.03%	10	Waiver	10.44%	10	Waiver	20.70%	10	Waiver	44.32%	10	Waiver	60.58%	10	Waiver	46.93%	10						
% IA Population	2.32%		% IA Population	0.22%		% IA Population	0.31%		% IA Population	0.17%		% IA Population	0.16%		% IA Population	0.47%		% IA Population	0.53%		% IA Population	0.39%		% IA Population	0.38%		% IA Population	0.64%							
% of ITG Market	2.81%		% of ITG Market	0.10%		% of ITG Market	0.13%		% of ITG Market	0.08%		% of ITG Market	0.09%		% of ITG Market	0.47%		% of ITG Market	0.50%		% of ITG Market	0.40%		% of ITG Market	0.38%		% of ITG Market	0.53%							
Monona			Drafford*			Carroll			Green			Boone*			Story			Marshall*			Tama			Benton			Linn*			Jones*			Jackson		
Plant	88.25%	1	Plant	81.22%	2	Plant	87.55%	1	Plant	94.95%	1	Plant	88.71%	2	Plant	82.25%	2	Plant	84.89%	2	Plant	85.99%	1	Plant	79.35%	1	Plant	84.85%	3						
GF	9.41%	3	GF	6.28%	3	GF	6.36%	3	GF	7.54%	3	GF	4.00%	3	GF	4.00%	3	GF	4.55%	3	GF	4.54%	3	GF	4.54%	3	GF	3.95%	4						
Waiver	3.36%	10	Waiver	3.12%	10	Waiver	6.00%	10	Waiver	7.91%	10	Waiver	14.01%	10	Waiver	13.78%	10	Waiver	10.77%	10	Waiver	23.65%	10	Waiver	18.10%	10	Waiver	12.00%	10						
% IA Population	0.27%		% IA Population	0.52%		% IA Population	0.85%		% IA Population	0.27%		% IA Population	0.84%		% IA Population	3.09%		% IA Population	1.26%		% IA Population	0.94%		% IA Population	0.80%		% IA Population	0.72%							
% of ITG Market	0.15%		% of ITG Market	0.29%		% of ITG Market	0.38%		% of ITG Market	0.86%		% of ITG Market	1.03%		% of ITG Market	0.31%		% of ITG Market	0.27%		% of ITG Market	0.27%		% of ITG Market	0.62%		% of ITG Market	0.85%							
Harrison			Shelby			Audubon*			Guthrie			Dallas*			Polk*			Jasper*			Powsheik*			Iowa*			Johnson*			Cedar			Clinton		
Plant	72.25%	1	Plant	84.70%	1	Plant	85.88%	2	Plant	74.32%	2	Plant	78.71%	4	Plant	77.95%	4	Plant	78.22%	2	Plant	77.32%	2	Plant	78.64%	2	Plant	83.40%	3						
GF	16.62%	3	GF	7.12%	3	GF	6.06%	3	GF	6.34%	3	GF	3.49%	4	GF	3.96%	4	GF	5.24%	3	GF	3.74%	3	GF	4.30%	3	GF	2.20%	3						
Waiver	11.51%	12	Waiver	8.17%	12	Waiver	8.08%	10	Waiver	19.03%	10	Waiver	18.34%	11	Waiver	18.53%	11	Waiver	18.53%	11	Waiver	18.53%	11	Waiver	19.94%	11	Waiver	17.06%	11						
% IA Population	0.48%		% IA Population	0.37%		% IA Population	0.18%		% IA Population	0.33%		% IA Population	3.12%		% IA Population	15.43%		% IA Population	1.05%		% IA Population	1.18%		% IA Population	0.58%		% IA Population	0.52%							
% of ITG Market	0.16%		% of ITG Market	0.22%		% of ITG Market	0.08%		% of ITG Market	0.37%		% of ITG Market	6.30%		% of ITG Market	22.58%		% of ITG Market	1.26%		% of ITG Market	1.26%		% of ITG Market	0.57%		% of ITG Market	0.43%							
Post vauvauville*			Cass			Adair*			Madison			Warren*			Marion			Mahaska			Keokuk*			Washington			Louis*								
Plant	75.23%	1	Plant	82.38%	1	Plant	77.32%	2	Plant	70.34%	1	Plant	72.35%	2	Plant	83.55%	1	Plant	81.90%	1	Plant	88.77%	2	Plant	80.27%	2	Plant	80.00%	0						
GF	16.43%	3	GF	8.07%	3	GF	6.33%	3	GF	6.33%	3	GF	5.52%	3	GF	4.74%	3	GF	5.98%	3	GF	11.89%	3	GF	23.74%	3	GF	4.49%	4						
Waiver	8.29%	10	Waiver	8.95%	10	Waiver	18.57%	10	Waiver	23.32%	10	Waiver	19.76%	10	Waiver	17.00%	10	Waiver	19.54%	10	Waiver	19.54%	10	Waiver	9.96%										



23



24